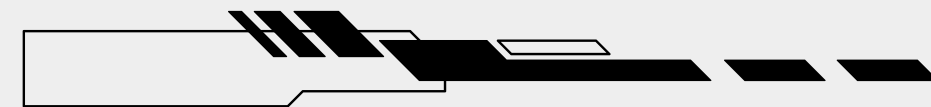
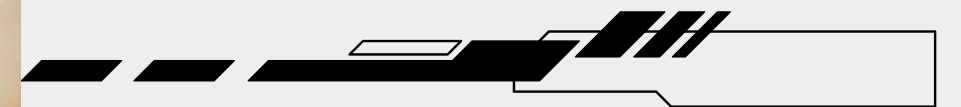


ZHU CONSULTING

STEERING AI TOWARDS A HUMAN-CENTERED FUTURE



SPECIAL ADVISORY

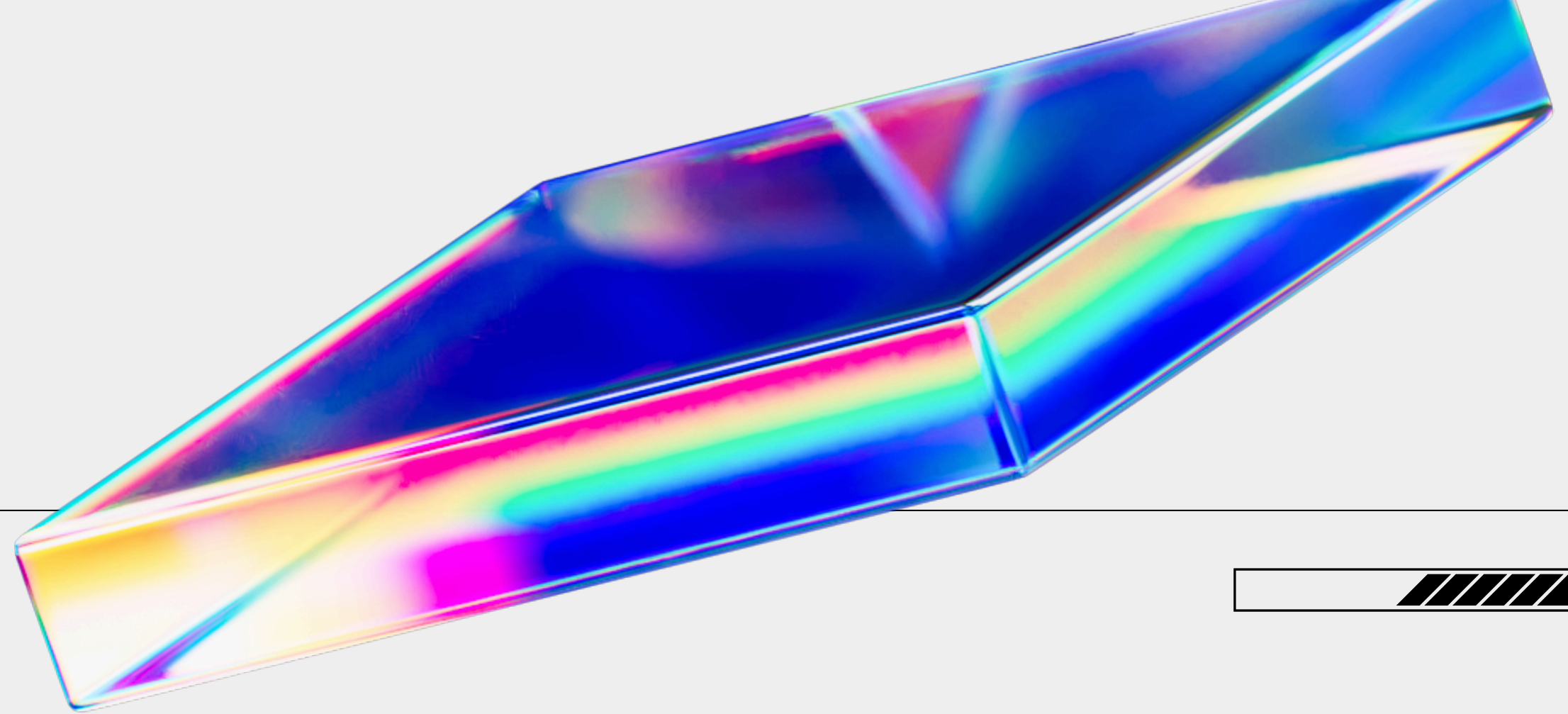


360° PERSPECTIVE™



<https://zhuconsulting.com/ai>

MISSION



The current era of unprecedented and rapid AI evolution presents humanity with both boundless promise and underassessed risks.

This special advisory aims to contributing to ensuring AI development and deployment embed value-centered, accountable, and inclusive systemic architectures that secure human flourishing and planetary well-being.

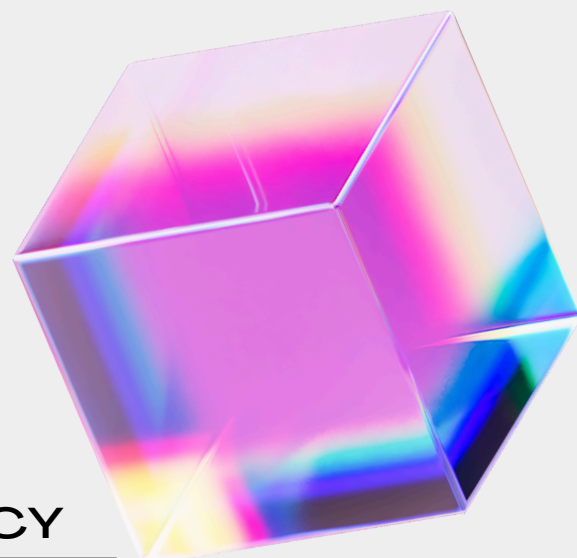


ADVISORY PATHWAYS

ZHU CONSULTING



PUBLIC AWARENESS & RESPONSIBLE AI LITERACY



- 1.Design and deliver targeted digital literacy programs on human-centered AI.
- 2.Develop communication frameworks and toolkits that translate complex responsible AI concepts into accessible public knowledge.
- 3.Lead public dialogues and multi-stakeholder forums to foster understanding of human-centered AI and its societal impacts.



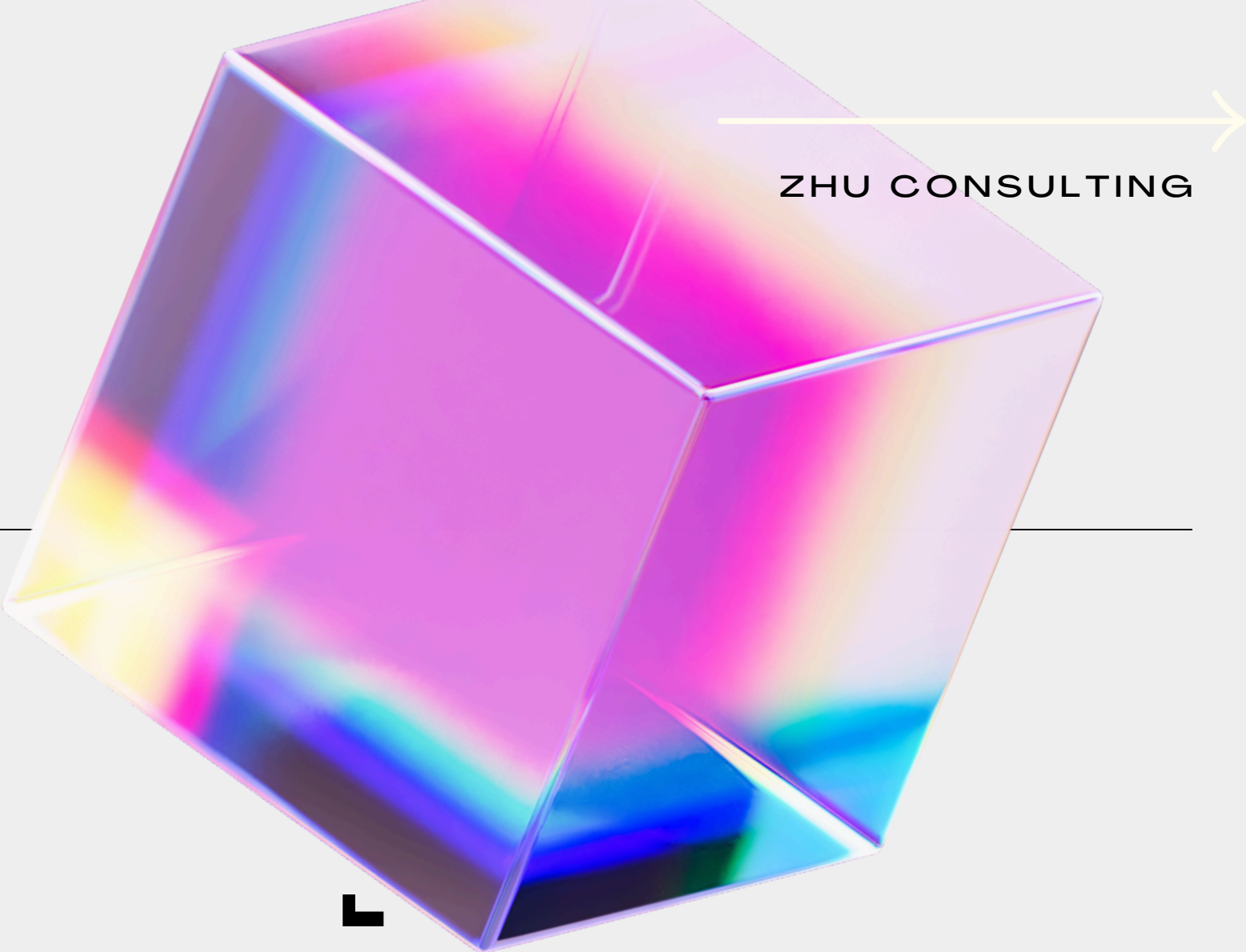
ETHICAL TESTING, EVALUATION & READINESS

- 1.Author and evaluate high-complexity ethical scenarios to test AI behavior, robustness, and alignment with human rights principles.
- 2.Support teams in integrating ethical standards into product design, evaluation, and deployment cycles.



CROSS-SECTOR COLLABORATION & GLOBAL ALIGNMENT

- 1.Forge cross-boundary alliances between governments, civil society, academia, and technology companies to align incentives on AI safety and equity.
- 2.Facilitate strategic stakeholder alignment sessions to build shared missions, operating principles, and cooperation frameworks.
- 3.Collaborate as a part of a community of practitioners to help advance AI alignment initiatives.
- 4.Advise on coalition strategies that turn fragmented initiatives into coherent, high-impact collective action.





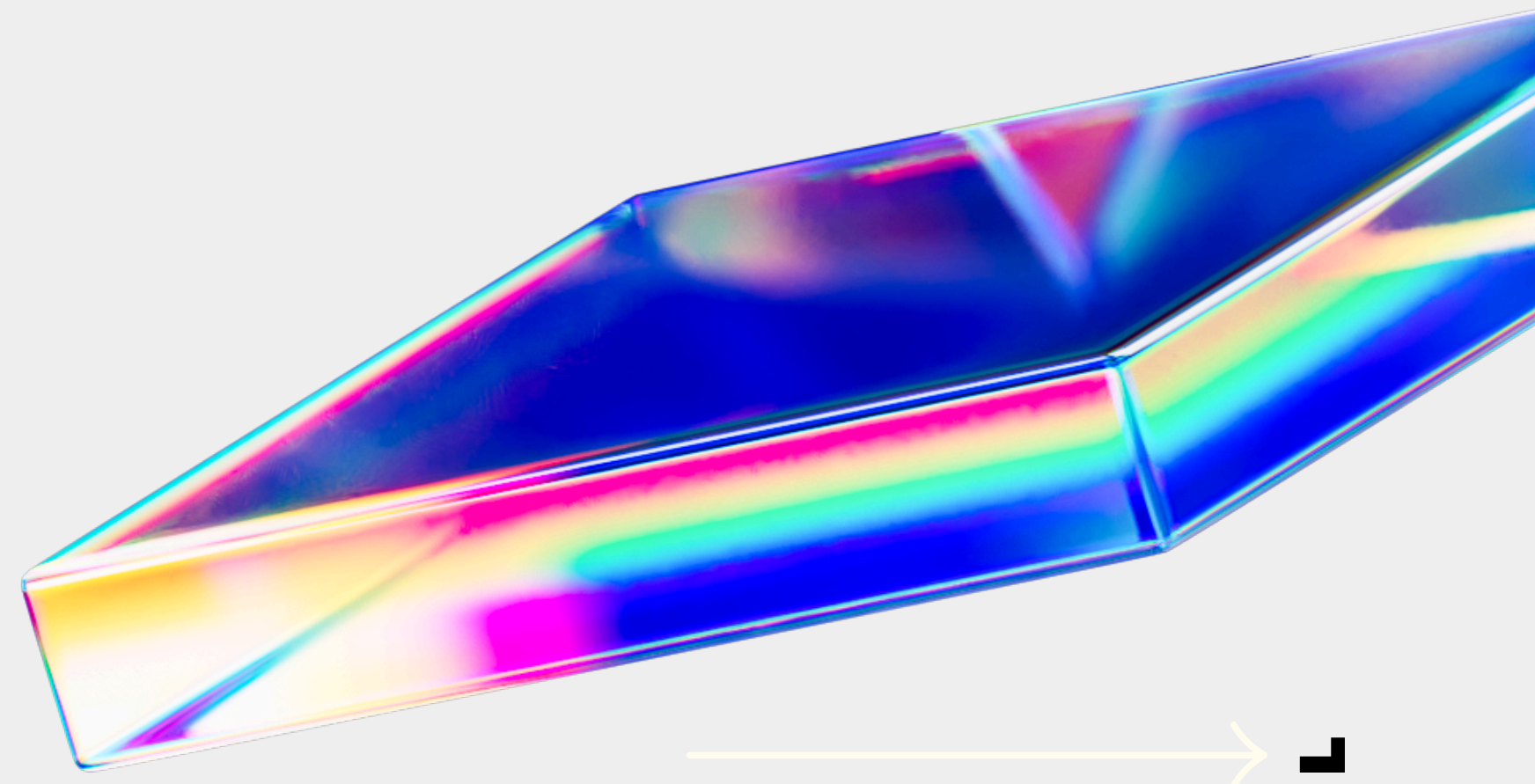
ZHU CONSULTING

CORE GOALS

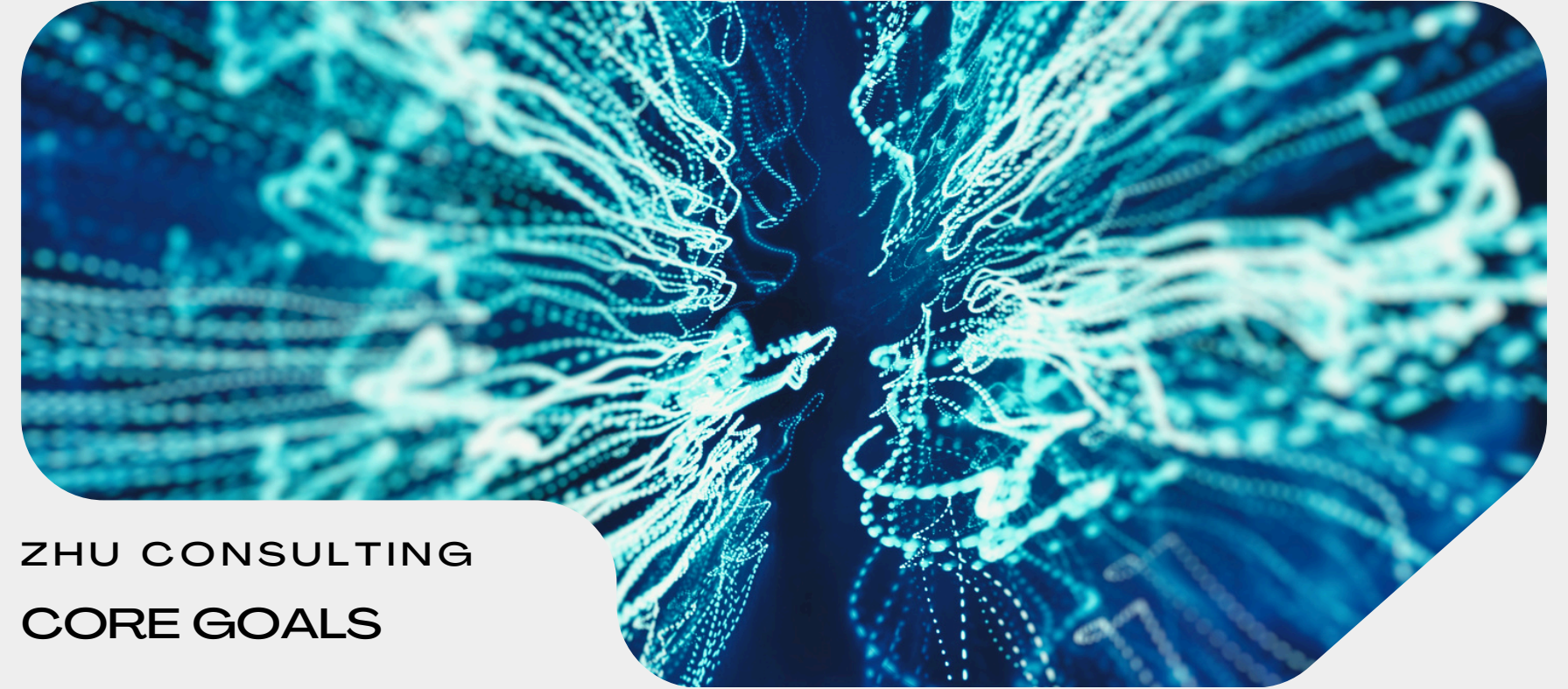
TRANSLATING VALUES INTO ACTIONABLE FRAMEWORKS

Work with leaders across sectors – from policy and research to technology and governance – to translate ethical intent such as human rights, equity, and social justice into mandates, decision frameworks, and accountability systems that shape AI and emerging technologies with strategic clarity and measurable standards.

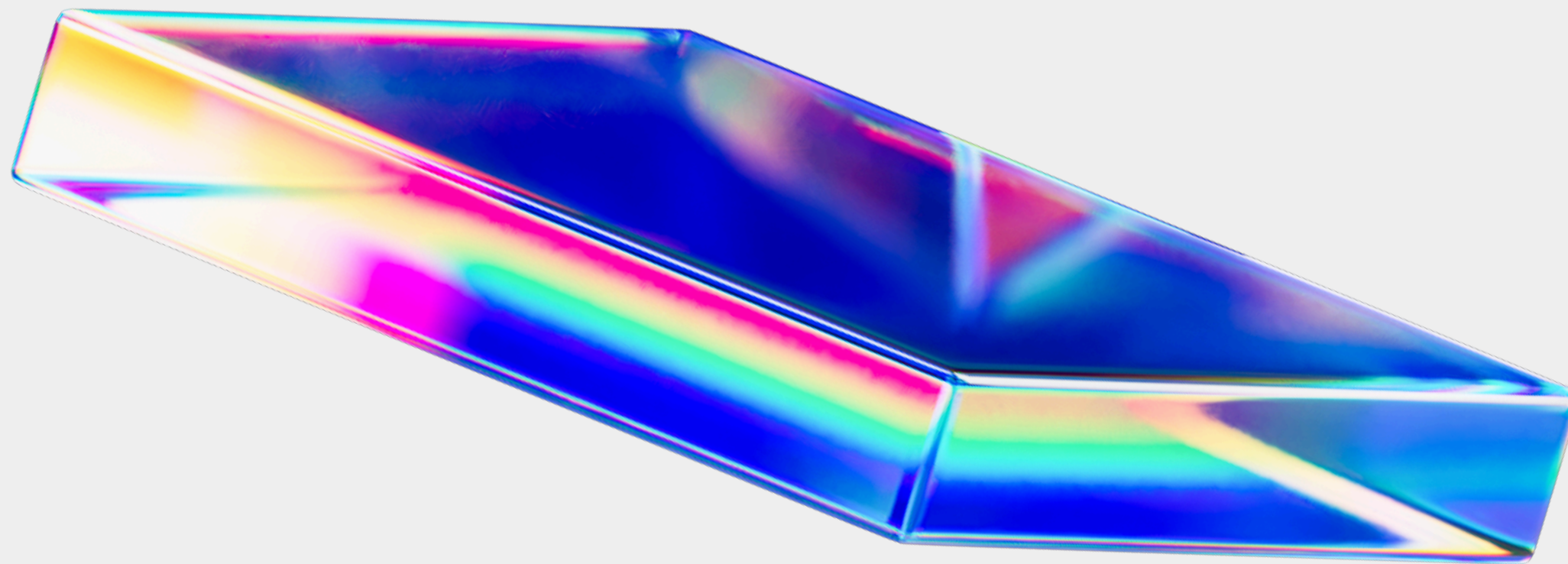
Raise public digital awareness on responsible usage of AI, AI-human collaboration, AI in education, skills transitioning, and deepfake countermeasures.



VALUE PLURALISM & INCLUSIVE DESIGN



ZHU CONSULTING
CORE GOALS



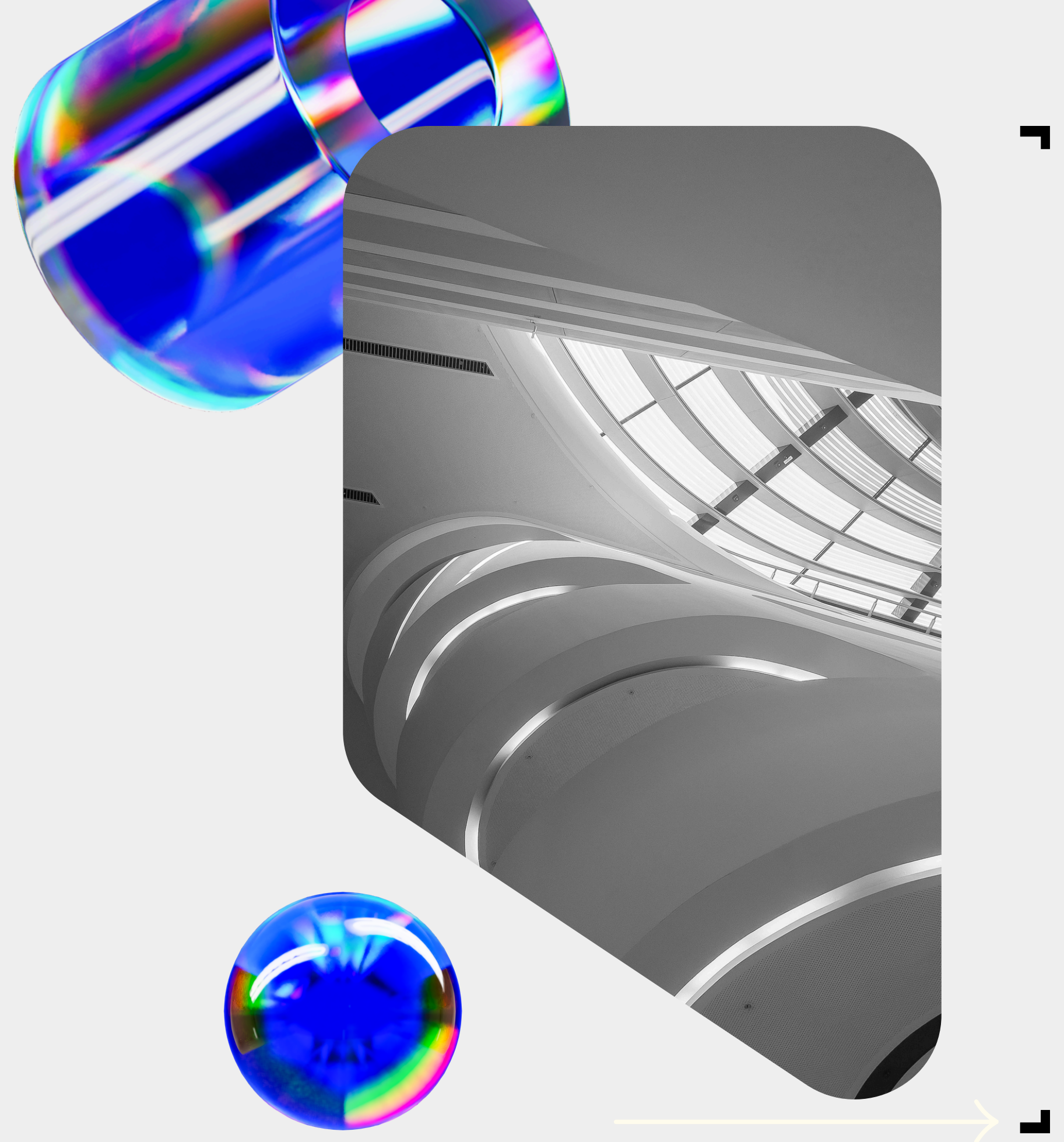
Shape global processes to aggregate diverse human values, prioritizing vulnerable communities to counter systemic bias. Develop inclusive models that collect and reconcile pluralism, ensuring that inclusion is not an afterthought but a structural feature of AI value alignment and policy formation.



STAKEHOLDER ALIGNMENT & GLOBAL ALLIANCE STRATEGY

Architect multi-stakeholder systemic alignment strategies that harmonize incentives across governments, the private sector, academia, civil society, and multilateral institutions to forge strategic alliances guided by shared interests. This involves clarifying shared missions and building the connective frameworks that turn fragmented efforts into coherent global cooperation.

ZHU CONSULTING
CORE GOALS



ZHU CONSULTING

WORK TOGETHER TODAY



CONTACT + FOLLOW

<https://zhuconsulting.com/ai>
<https://www.linkedin.com/company/zhuconsulting>
<https://zhuconsulting.substack.com/>

© 2025-2026 Artiome LLC (Zhu Consulting)